

## **NEED HELP?**

Visit [Jabra.com/help/speak750](https://Jabra.com/help/speak750)

Mises à jour gratuites pour votre  
Actualizaciones gratuitas para Speak  
Atualizações grátis para a sua fala  
免费提供 Speak 更新  
無料アップデート

**[Jabra.com/register](https://Jabra.com/register)**



# GET STARTED

JABRA SPEAK 750



**FREE UPDATES FOR YOUR SPEAK**

[Jabra.com/register](https://Jabra.com/register)



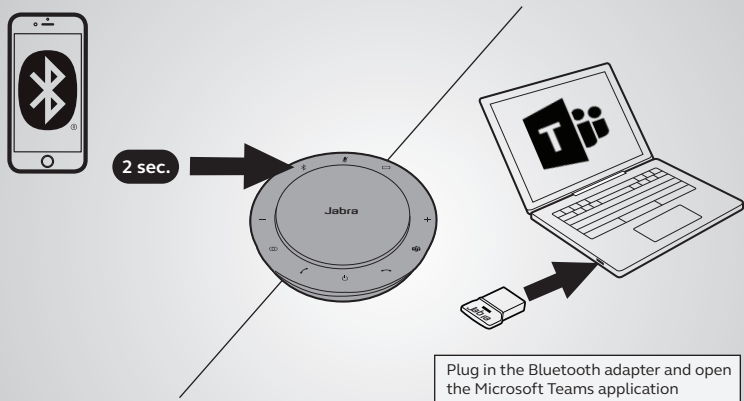
ENGLISH .....	1	TÜRKÇE.....	45
FRANÇAIS.....	5	FRANÇAIS (CANADA) .....	49
DEUTSCH .....	9	ESPAÑOL (MÉXICO) .....	53
NEDERLANDS.....	13	PORTUGUÊS (BRASIL) .....	57
ITALIANO .....	17	简体中文.....	61
PORTUGUÊS.....	21	繁體中文.....	65
ESPAÑOL .....	25	日本語 .....	69
DANSK/SVENSKA.....	29	한국어 .....	73
РУССКИЙ .....	33		
ČESKY.....	37		
POLSKI .....	41		



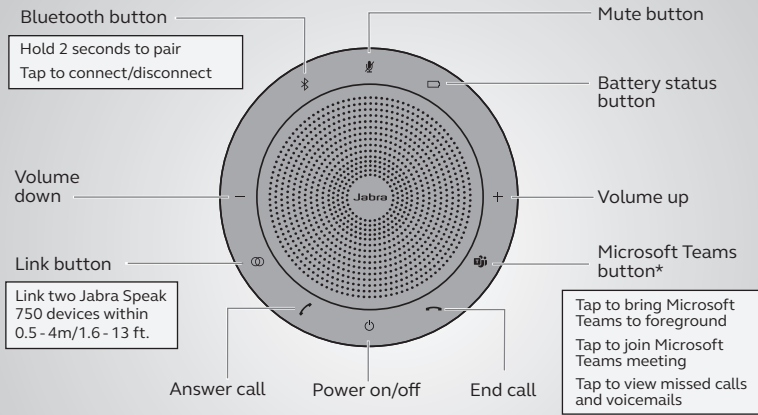
[Jabra.com/manuals](https://www.jabra.com/manuals)

# How to connect

using Bluetooth or Bluetooth adapter



# How to use



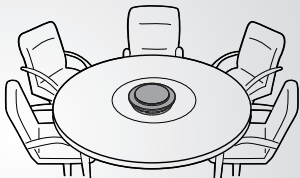
Personalize your Jabra Speak 750 using the Jabra Direct software.  
Download for free at [jabra.com/direct](https://jabra.com/direct)

# Where to position

Desk



Small meeting room

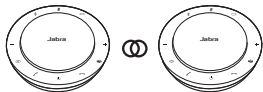



When sitting in front of the Jabra Speak 750 use the stand to better direct the audio.

## Large meeting room



## Stereo media

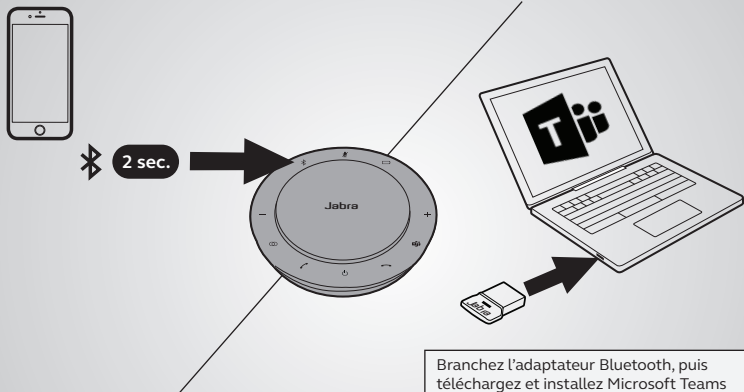


Tap  to link two Jabra Speak 750 devices within 0.5m - 4m or 1.6ft- 13ft.



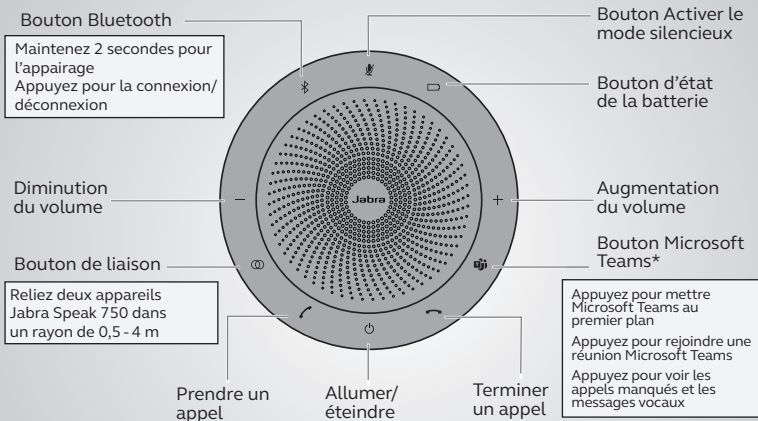
# Instructions de connexion

par Bluetooth ou adaptateur Bluetooth



# Instructions d'utilisation

FRANÇAIS



Personnalisez votre Jabra Speak 750 à l'aide du logiciel Jabra Direct.  
Téléchargez-le gratuitement sur [jabra.com/direct](https://jabra.com/direct)

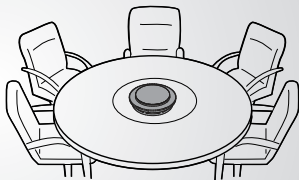
\*La fonctionnalité du bouton dépend de l'application Microsoft Teams 6

# Instructions de positionnement

## Bureau



## Petite salle de réunion

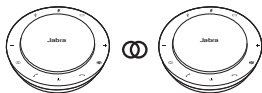



Lorsque vous êtes assis devant le Jabra Speak 750, utilisez le support pour mieux diriger l'audio.

## Grande salle de réunion



## Support stéréo

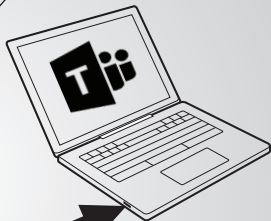
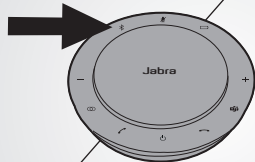


Appuyez sur  pour relier deux appareils Jabra Speak 750 dans un rayon de 0,5 - 4 m.

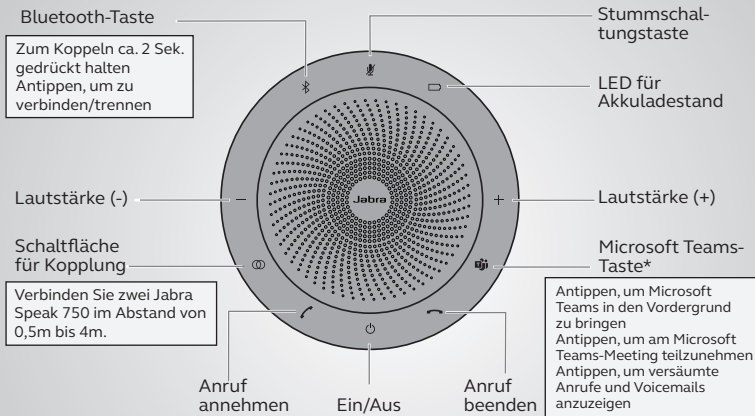
# So verbinden Sie Ihr Gerät via Bluetooth oder Bluetooth-Adapter



2 sec.



Stecken Sie den Bluetooth-Adapter ein und öffnen Sie  
Sie Microsoft Teams nach dem Herunterladen



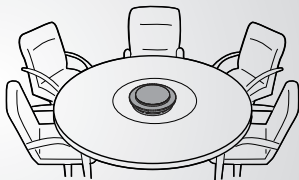
Personalisieren Sie Ihr Jabra Speak 750 mit der Jabra Direct-Software. Kostenloser Download über [jabra.com/direct](https://jabra.com/direct)

# So wird das Gerät aufgestellt

Schreibtisch

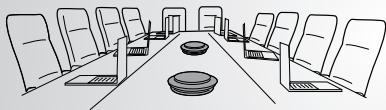


Kleiner Tagungsraum

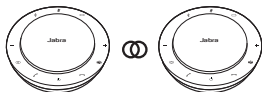



Wenn Sie vor dem Jabra Speak 750 sitzen, verwenden Sie bitte den Standfuß für eine gezieltere Audioausrichtung.

## Großer Tagungsraum



## Stereo-Medien

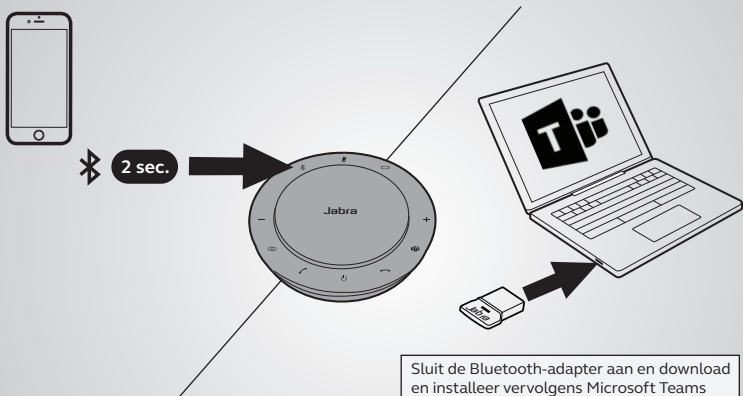


antippen  um zwei Jabra Speak 750 im Abstand von 0,5m bis 4m zu verbinden.



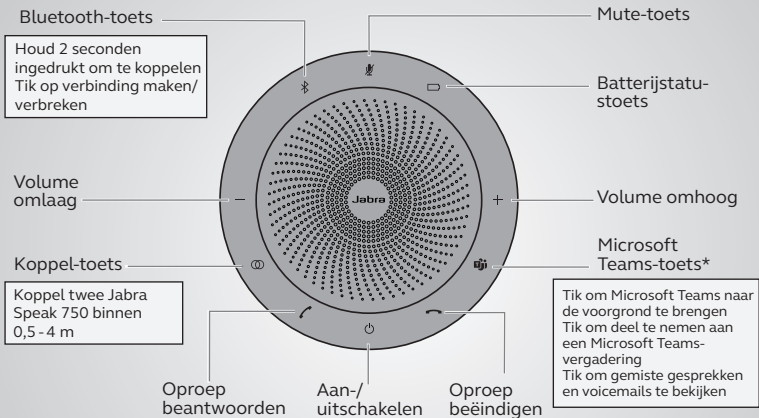
# Verbinding maken

via Bluetooth of Bluetooth-adapter



# Gebruiken

NEDERLANDS



Personaliseer uw Jabra Speak 750 via de Jabra Direct-software.  
Download gratis op [jabra.com/direct](https://jabra.com/direct)

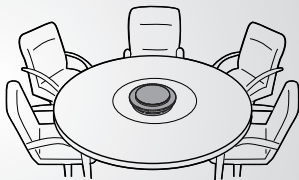
\*Functionaliteit van de toets afhankelijk van de Microsoft Teams-toepassing 14

# Plaatsing

Bureau



Kleine vergaderruimte

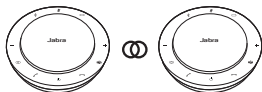



Wanneer u voor de Jabra Speak 750 zit gebruikt u de standaard om het geluid beter te richten.

## Grote vergaderruimte



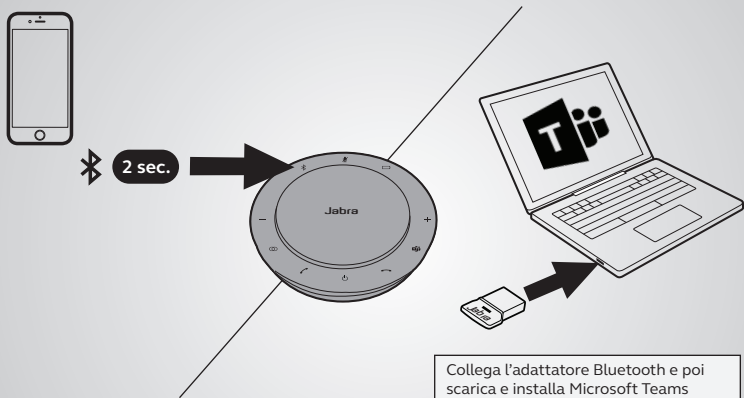
## Stereomedia



Tik  om twee Jabra Speak 750 binnen 0,5 - 4 m te koppelen.

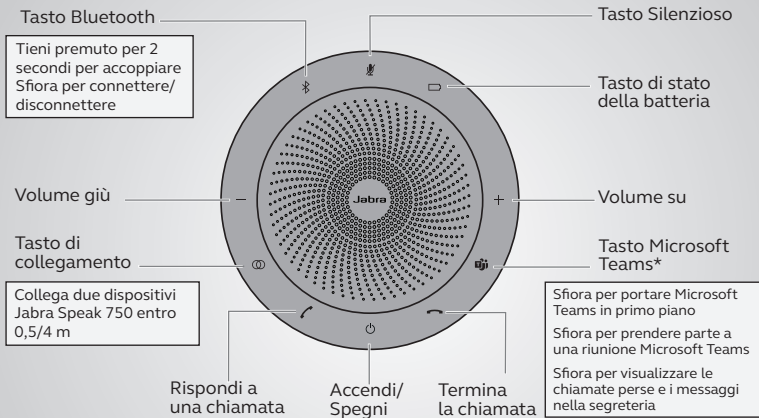
# Come connetterlo

usando il Bluetooth o l'adattatore Bluetooth



# Come utilizzarlo

ITALIANO



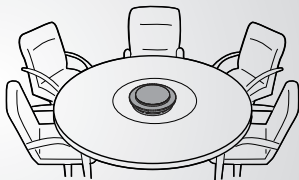
Personalizza Jabra Speak 750 utilizzando il software Jabra Direct.  
Scaricalo gratuitamente su [jabra.com/direct](https://jabra.com/direct)

# Dove posizionarlo

## Scrivania

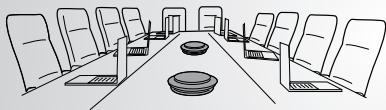


## Sala riunioni piccola

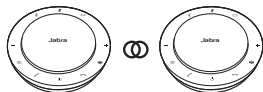



Quando sei seduto di fronte a Jabra Speak 750 utilizza il supporto per dirigere meglio l'audio.

## Sala riunioni grande



## Supporti stereo

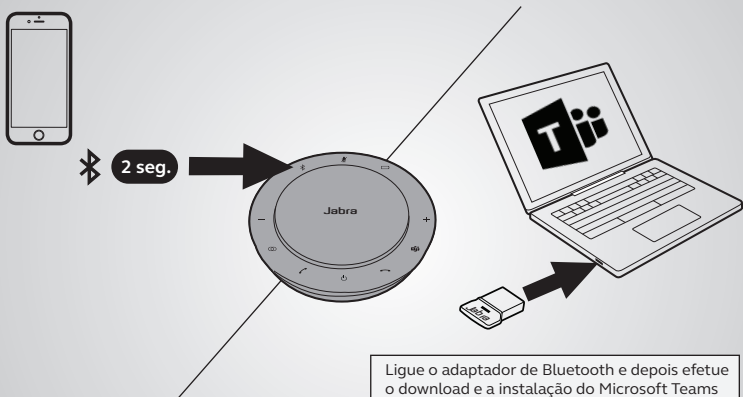


Sfiora  per collegare due dispositivi Jabra Speak 750 entro 0,5/4 m.

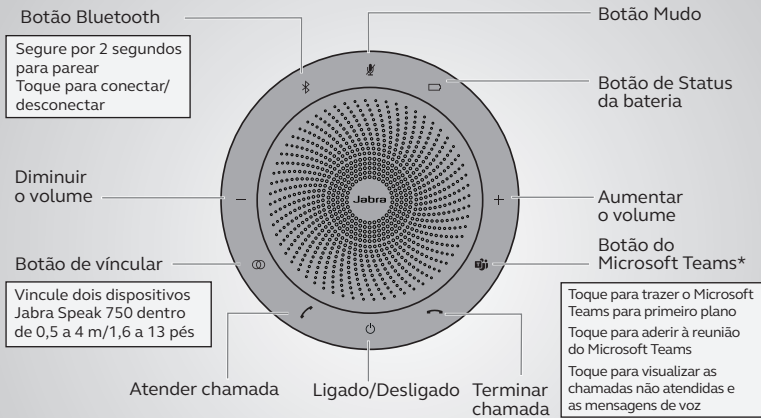


# Como conectar-se

usando Bluetooth ou adaptador de Bluetooth



# Como usar



Personalize o seu Jabra Speak 750 usando o software Jabra Direct. Baixe gratuitamente em [jabra.com/direct](https://jabra.com/direct)

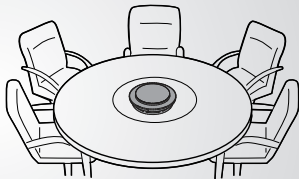
\*A funcionalidade do botão depende da aplicação Microsoft Teams

# Onde posicionar

Mesa



Pequena sala de reunião

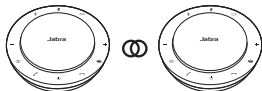



Ao se sentar em frente ao Jabra Speak 750 use o suporte para direcionar melhor o áudio.

## Grande sala de reunião



## Mídia estéreo



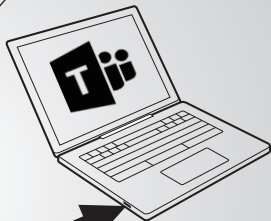
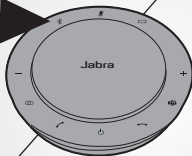
Toque em  para vincular dois dispositivos Jabra Speak 750 dentro de 0,5 a 4 m ou 1,6 a 13 pés.

# Cómo se conecta

usando Bluetooth o el adaptador Bluetooth

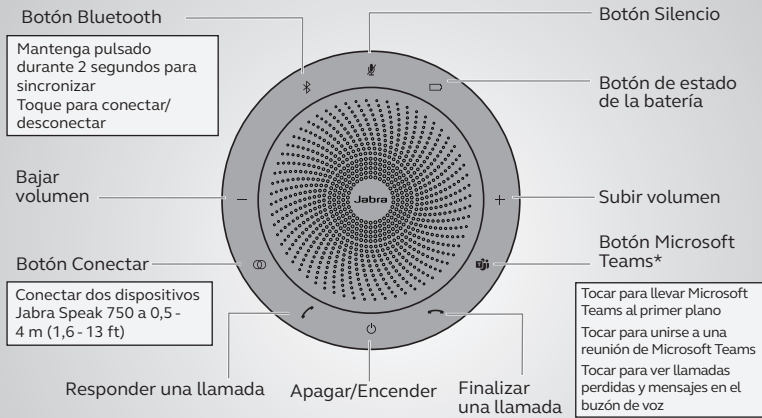


2 seg.



Conecte el adaptador Bluetooth, descargue Microsoft Teams e instálelo

# Cómo se usa



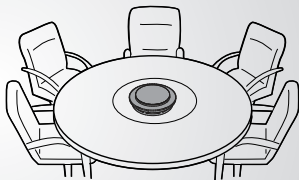
Personalice su Jabra Speak 750 utilizando el software Jabra Direct.  
 Descárguelo gratis en [jabra.com/direct](https://jabra.com/direct)

# Dónde se coloca

## Escritorio

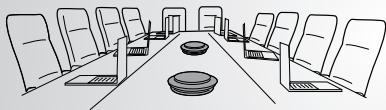


## Sala de reuniones pequeña

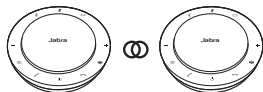



Al estar delante del Jabra Speak 750  
use el pie para orientar mejor el audio.

## Sala de reuniones grande



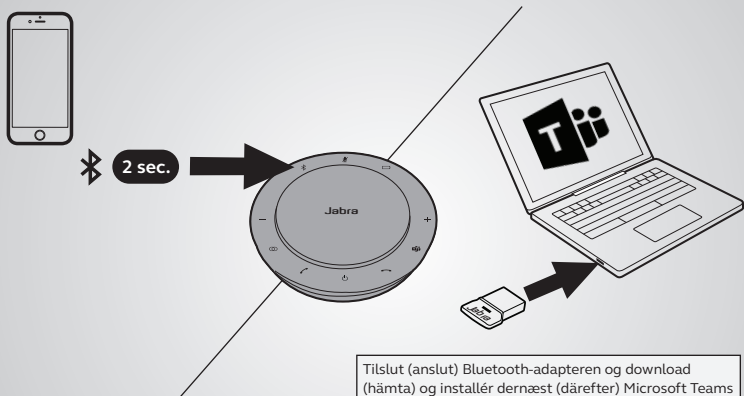
## Medios estéreo



Toque  para conectar dos dispositivos Jabra Speak 750 a 0,5 - 4 m (1,6 - 13 ft).

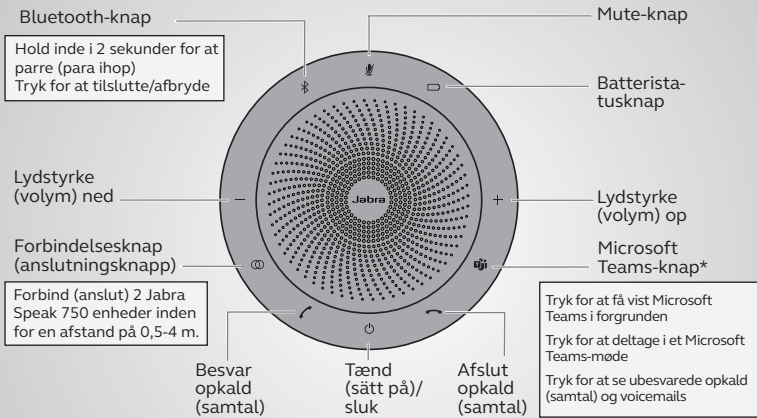


# Sådan tilslutter (ansluter) du med Bluetooth eller Bluetooth-adapter



# Sådan bruges (anvendes) Jabra Speak 750

DANSK/SVENSKA



Tilpas (anpassa) din Jabra Speak 750 med Jabra Direct-softwaren.  
Kan downloades gratis på [jabra.com/direct](https://jabra.com/direct).

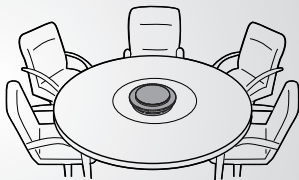
\*Knappens funktioner afhænger (beror på) af Microsoft Teams-applikationen 30

# Placering

## Skrivebord



## Lille mødelokale

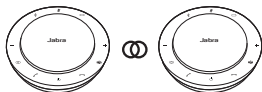



Når du sidder foran (framför) Jabra Speak 750 skal du bruge (använda) stativet for bedre at kunne styre lyden (ljudet).

## Stort mødelokale



## Stereomedie



Tryk  for at forbinde (ansluta) 2 Jabra Speak 750 enheder inden for en afstand på 0,5-4 m.

# Подключение

с помощью Bluetooth или Bluetooth-адаптера



# Использование

РУССКИЙ



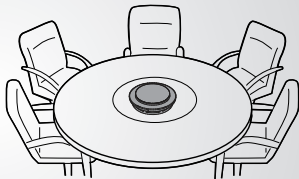
Настройте Jabra Speak 750 под свои нужды с помощью программного обеспечения Jabra Direct. Загрузите бесплатно на сайте [jabra.com/direct](https://jabra.com/direct)

# Размещение

Стол



Небольшой  
конференц-зал

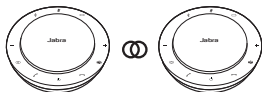



Используйте подставку для лучшего направления звука, когда сидите перед устройством Jabra Speak 750.

## Большой конференц-зал



## Мультимедийная стереосистема

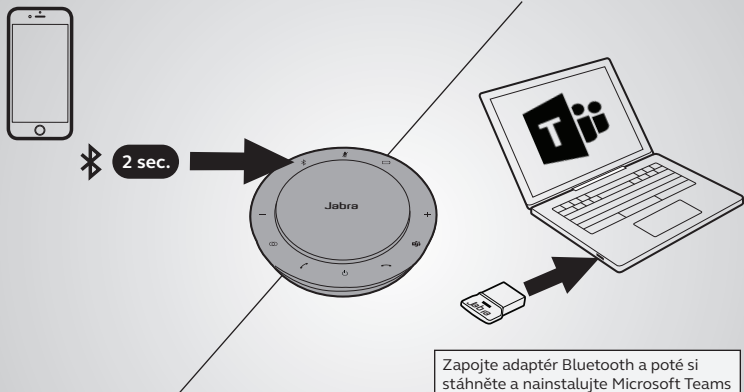


Коснитесь  для соединения двух устройств Jabra Speak 750 в пределах 0,4-4 м.



# Připojení

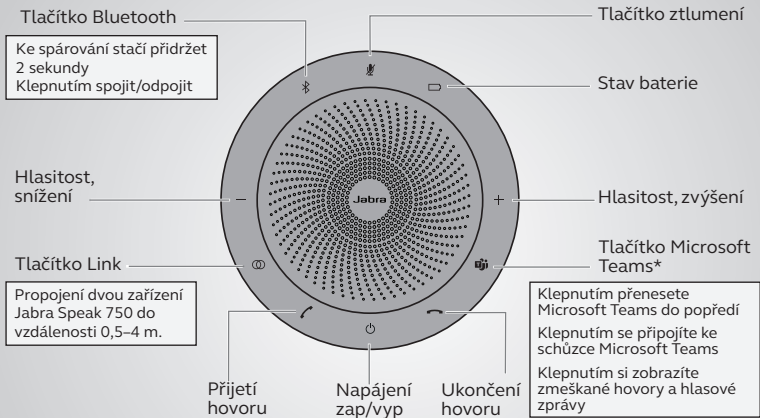
pomocí Bluetooth nebo adaptéru Bluetooth



Zapojte adaptér Bluetooth a poté si stáhněte a nainstalujte Microsoft Teams

# Způsob použití

ČESKY



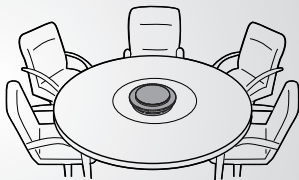
Pomocí softwaru Jabra Direct si můžete Jabra Speak 750 upravit dle vlastních preferencí. Stáhněte si zdarma na [jabra.com/direct](https://jabra.com/direct)

# Kam umístit

Stůl



Malá jednací místnost

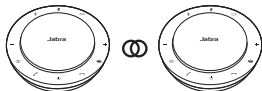



Sedíte-li před Jabra Speak 750, použijte stojan, aby se lépe nasměřoval zvuk.

## Velká jednací místnost



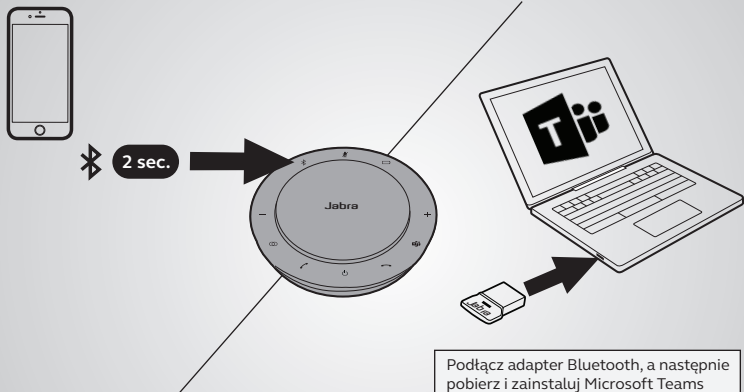
## Stereo média



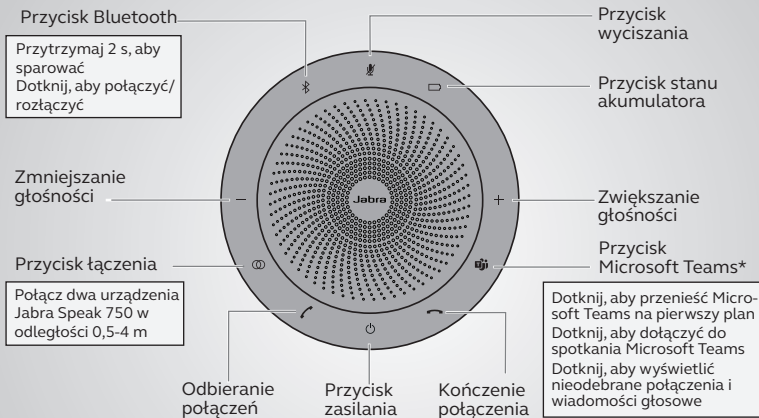
Klepnutím na  propojíte dvě zařízení Jabra Speak 750 do vzdálenosti 0,5–4 m.

# Podłączanie

za pośrednictwem połączenia lub adaptera Bluetooth



# Obsługa



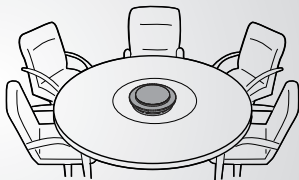
Dostosuj urządzenie Jabra Speak 750 za pomocą oprogramowania Jabra Direct. Pobierz bezpłatnie ze strony [jabra.com/direct](https://jabra.com/direct)

# Wybór położenia

Biurko



Niewielki pokój konferencyjny

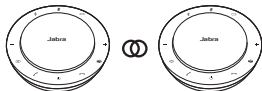



Siedząc naprzeciw urządzenia Jabra Speak 750, użyj podstawki, aby lepiej kierować dźwięk.

## Duży pokój konferencyjny



## Media stereo



Dotknij , aby połączyć dwa urządzenia Jabra Speak 750 w odległości 0,5-4 m.

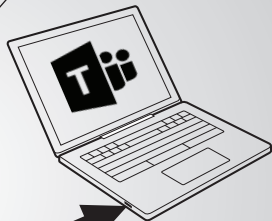
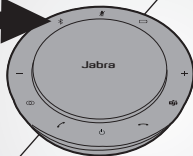


# Bağlantıyı

Bluetooth veya Bluetooth adaptörünü kullanarak



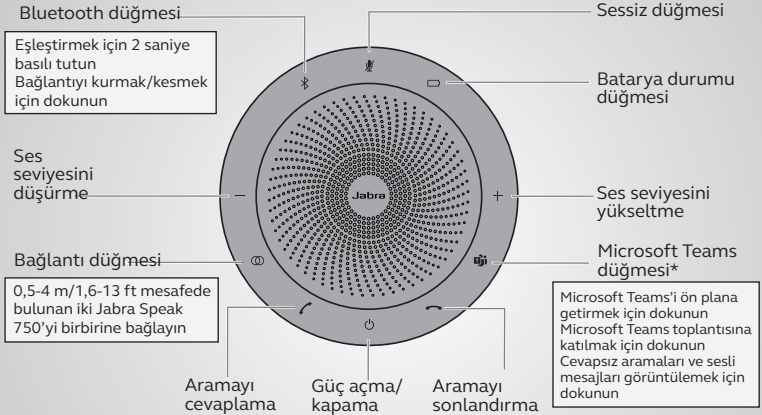
2 sec.



Bluetooth adaptörünü takın ve ardından  
Microsoft Teams'i yükleyin

# Kullanım

TÜRKÇE



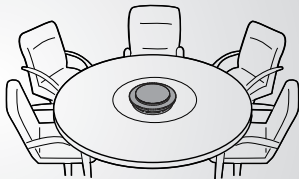
Jabra Speak 750'nü Jabra Direct yazılımı ile kişiselleştirin.  
[jabra.com/direct](https://jabra.com/direct) adresinden ücretsiz olarak indirin

# Cihaz nerede kurulmalı

Masa



Küçük toplantı odası

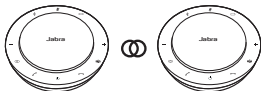



Jabra Speak 750'in önünde otururken sesi daha iyi kontrol edebilmek için standı kullanın.

## Büyük toplantı odası



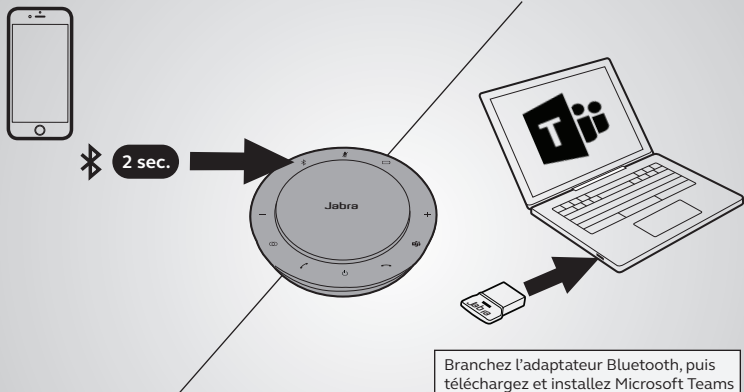
## Stereo medya



0,5-4 m/1,6-13 ft mesafede bulunan iki Jabra Speak 750'yi birbirine bağlamak için  simgesine dokununuz.

# Comment le connecter

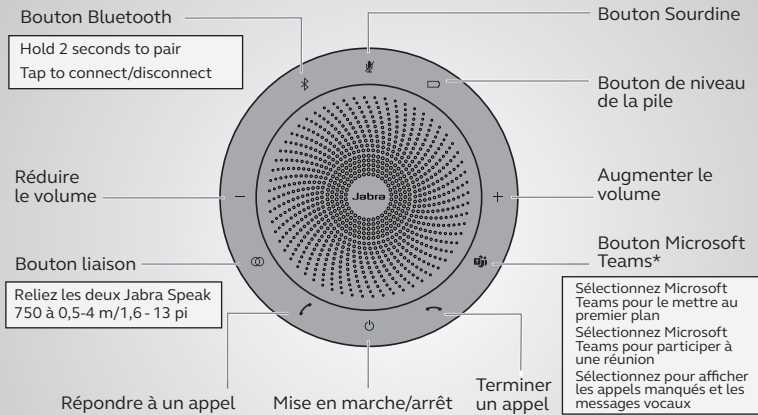
avec Bluetooth ou adaptateur Bluetooth



Branchez l'adaptateur Bluetooth, puis téléchargez et installez Microsoft Teams

# Comment l'utiliser

FRANÇAIS (CANADA)



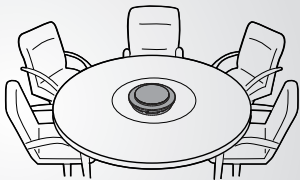
Personnaliser votre Jabra Speak 750 en utilisant le logiciel Jabra Direct. Télécharger gratuitement sur [jabra.com/direct](https://jabra.com/direct)

# Où le placer

## Bureau



## Petite salle de réunion

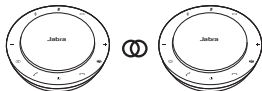



Une fois assis en face du Jabra Speak 750  
utiliser le support pour mieux diriger le son.

## Grande salle de réunion



## Support stéréo

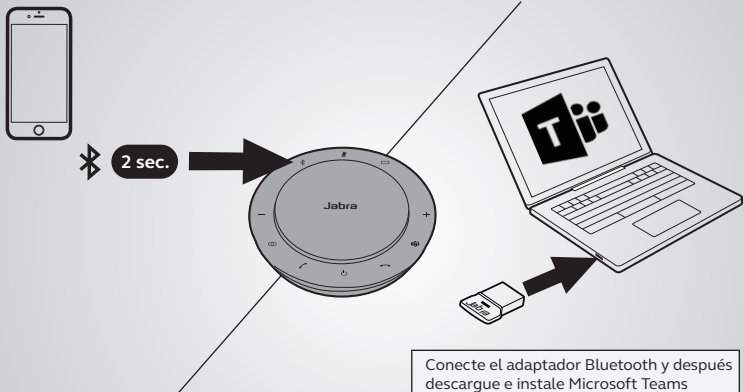


Sélectionnez  pour relier les deux Jabra Speak 750 à 0,5-4 m/1,6 - 13 pi.

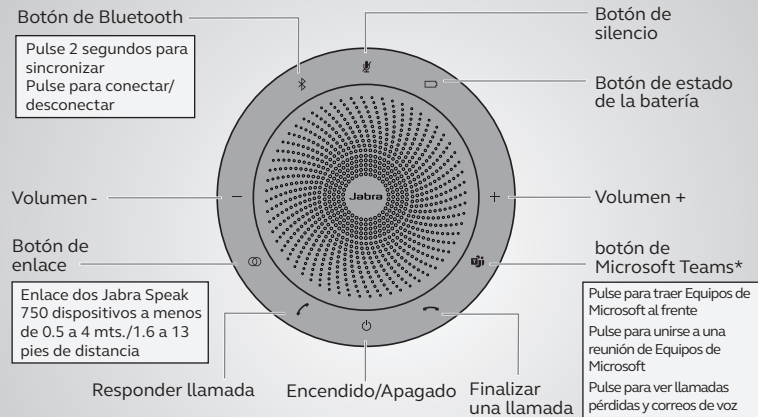


# Cómo conectarlo

con Bluetooth o adaptador para Bluetooth



# Cómo utilizarlo



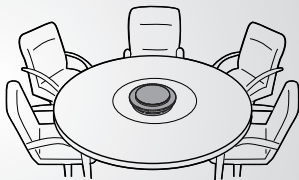
Personalice su Jabra Speak 750 con el software Jabra Direct.  
 Descárguelo gratis en [jabra.com/direct](https://jabra.com/direct)

# Dónde colocarlo

## Escritorio



## Sala de juntas pequeña

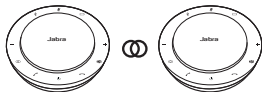



Cuando se sienta frente al Jabra Speak 750 use la base para dirigir mejor el audio.

## Sala de juntas grande



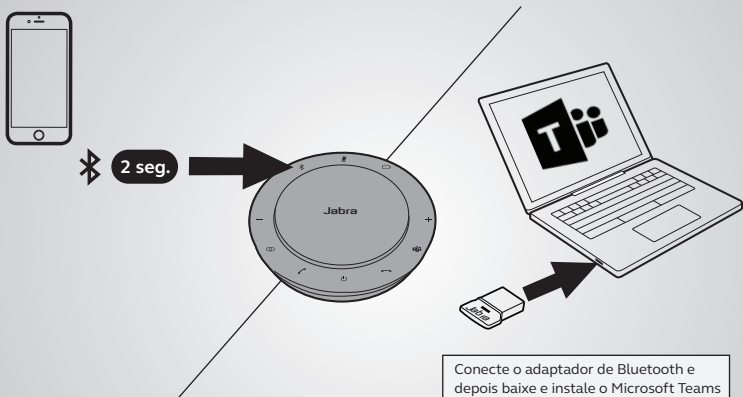
## Sistemas estereofónicos



Pulse  para enlazar dos Jabra Speak 750 dispositivos a menos de 0.5 mts. a 4 mts. o 1.6 a 13 pies.

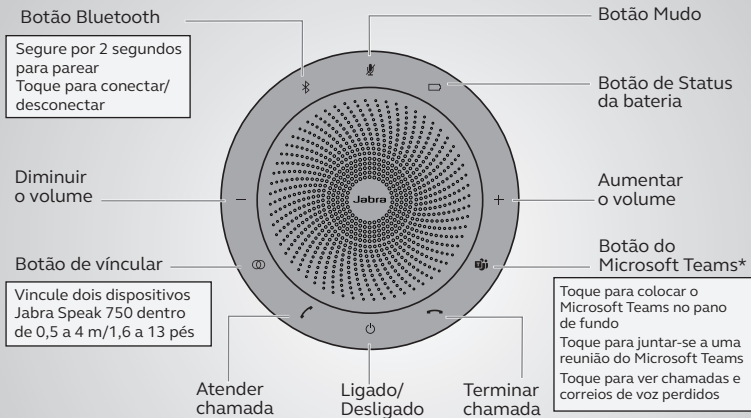
# Como conectar-se

usando Bluetooth ou adaptador de Bluetooth



# Como usar

PORTUGUÊS (BRASIL)



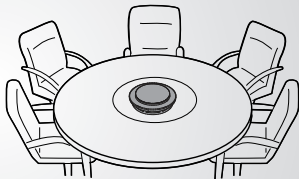
Personalize o seu Jabra Speak 750 usando o software Jabra Direct.  
Baixe gratuitamente em [jabra.com/direct](https://jabra.com/direct)

# Onde posicionar

Mesa

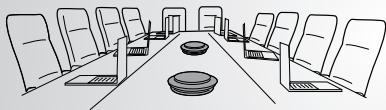


Pequena sala de reunião

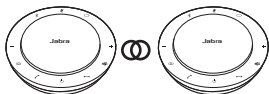



Ao se sentar em frente ao Jabra Speak 750 use o suporte para direcionar melhor o áudio.

## Grande sala de reunião



## Mídia estéreo



Toque em  para vincular dois dispositivos Jabra Speak 750 dentro de 0,5 a 4 m/1,6 a 13 pés.

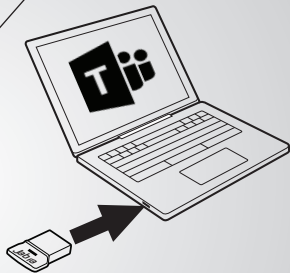
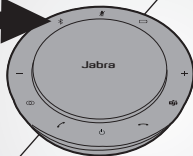


# 如何连接

使用蓝牙或蓝牙适配器

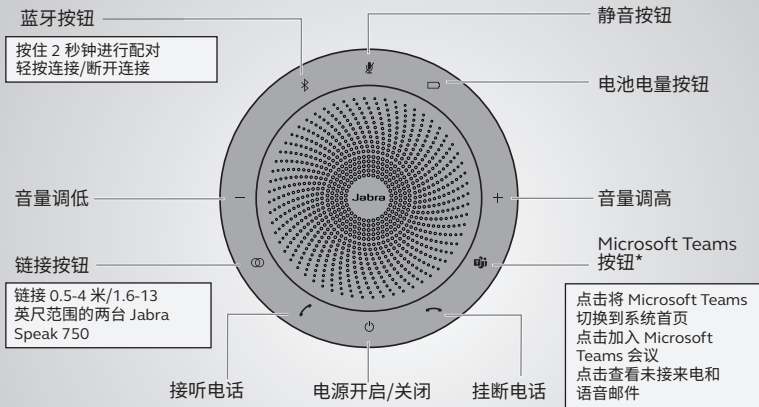


2 秒钟



插入蓝牙适配器, 然后下载并安装  
Microsoft Teams

# 如何使用



使用 Jabra Direct 软件个性化您的 Jabra Speak 750 从 [jabra.com/direct](http://jabra.com/direct) 免费下载

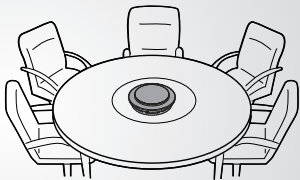
消费者若使用电源适配器供电，则应购买配套使用获得CCC认证并满足标准要求电源适配器的

# 摆放位置

## 桌面



## 小型会议室

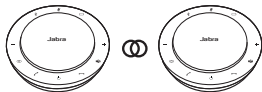



坐在 Jabra Speak 750 的前方时，  
使用支架以便更好地控制音频的方向

## 大型会议室



## 立体声媒体



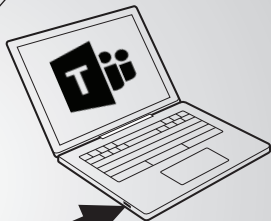
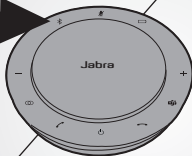
轻按  以链接 0.5-4 米/1.6-13 英尺范围的两台 Jabra Speak 750

# 如何連接

使用藍牙或藍牙配接器

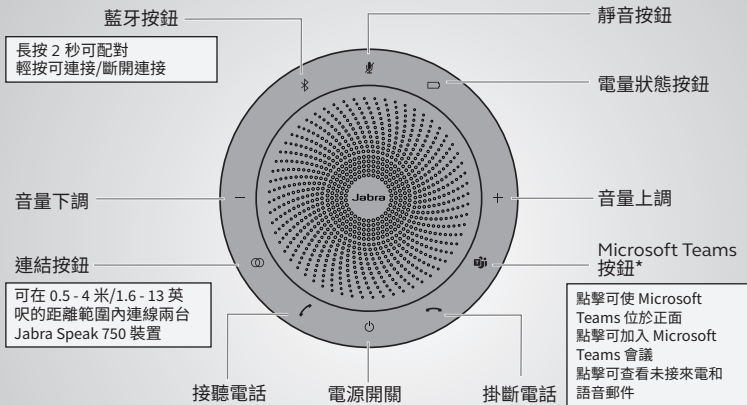


2 秒



插入藍牙傳輸器，然後下載並安裝  
Microsoft Teams

# 如何使用



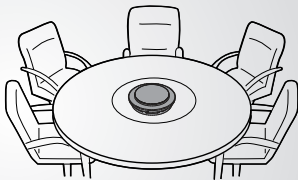
利用 Jabra Direct 軟體可對 Jabra Speak 750 進行個人化設定。  
請至 [jabra.com/direct](https://jabra.com/direct) 免費下載。

# 擺設位置

辦公桌



小會議室

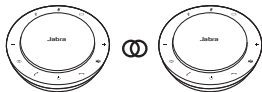



若坐在 Jabra Speak 750 正前方，  
使用腳架可讓聲音對得更準。

## 大會議室



## 立體聲媒體



輕按  可連結在 0.5-4 米/1.6-13 英尺的距離範圍內連線兩台 Jabra Speak 750 裝置

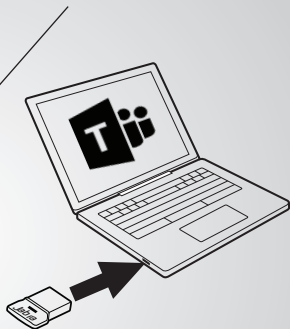
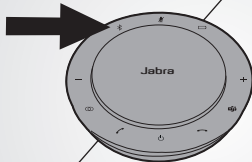


# 接続方法

Bluetooth または Bluetooth アダプターを使用する

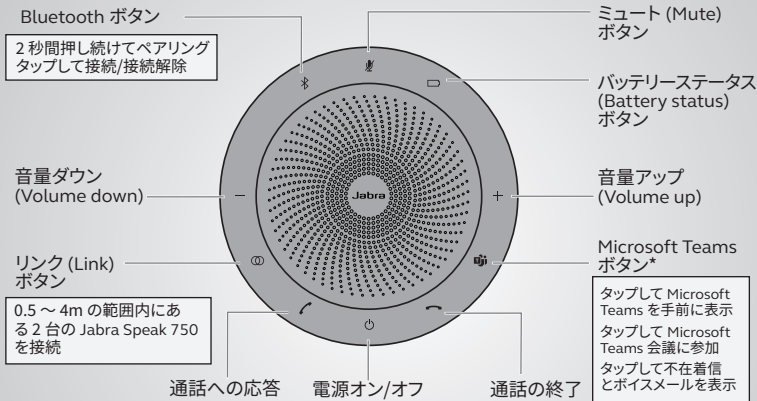


2 秒



Bluetooth アダプターを接続し、Microsoft Teams をダウンロードしてインストールします

# 使用方法



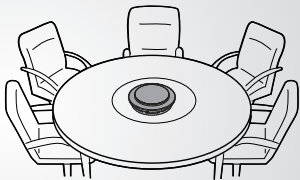
Jabra Direct ソフトウェアを使用して Jabra Speak 750 を  
カスタマイズ [jabra.com/direct](https://jabra.com/direct) から無料でダウンロード

# 使用場所

## デスク



## 小さな会議室

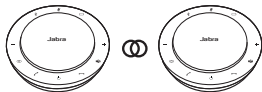


Jabra Speak 750 の前に座る場合  
スタンドを使用すると音声の伝達が向上します。

## 大きな会議室



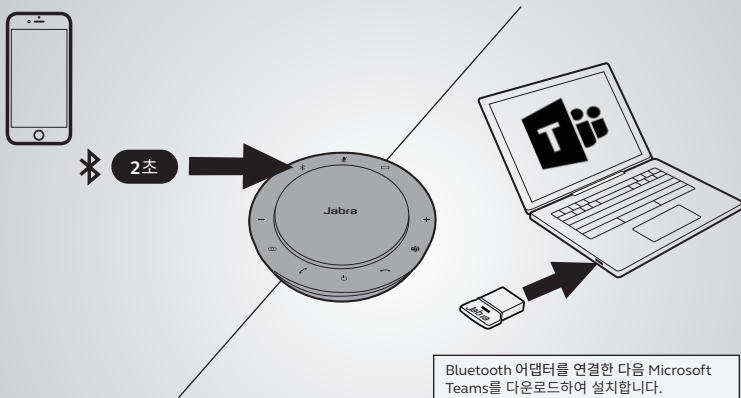
## ステレオメディア



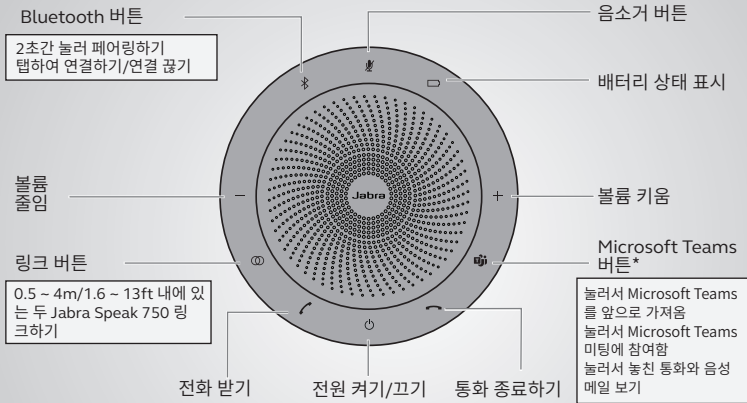
⊗ タップして 0.5 ~ 4m の範囲内にある 2 台の Jabra Speak 750 を接続。

# 연결하는 방법

Bluetooth 또는 Bluetooth 어댑터 사용



# 사용 방법



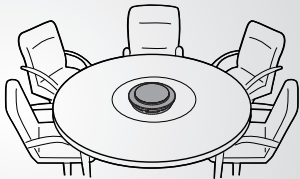
Jabra Direct 소프트웨어를 사용하여 Jabra Speak 750를 사용자 정의합니다.  
[jabra.com/direct](http://jabra.com/direct)에서 무료 다운로드하기

# 배치

## 데스크



## 작은 회의실

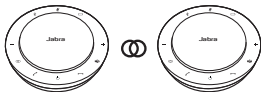



Jabra Speak 750 앞에 앉을 때는 스탠드를 사용하여 오디오 방향을 적합하게 맞출 수 있습니다.

## 큰 회의실



## 스테레오 미디어



탭하여  두 Jabra Speak 750를  
0.5 ~ 4m/1.6 ~ 13ft 범위 내에서 연결합니다.





本产品符合中国[电器电子产品有害物质限制使用管理办法]-简称中国ROHS, 本产品及其包装材料可能包含有害物质的名称和含量, 如下所示:

部件名称	有害物质					
	铅 (Pb)	汞 (Hg)	镉 (Cd)	六价铬 (Cr (VI))	多溴联苯 (PBB)	多溴二苯醚 (PBDE)
电子元器件	X	O	O	O	O	O
连接器	X	O	O	O	O	O
麦克风	X	O	O	O	O	O
交流电源插头 (若提供了交流充电器)	X	O	O	O	O	O

本表格依据SJ/T 11364 的规定编制。

O: 表示该有害物质在该部件所有均质材料中的含量低于GB/T 26572规定的限量要求。  
X: 表示该有害物质至少在该部件的某一均质材料中的含量超出GB/T 26572规定的限量要求。  
所有显示 X 的情况, 是按照欧盟 RoHS 采用了容许的豁免指标。

如本手册所述, 在正常使用条件下, 本产品的环保使用期为 10 年。在此期间, 产品不会泄露任何危险物质。

本产品可以回收, 必须按照当地法规处理。

設備名稱:藍牙揚聲器, 型號(型式):PHS040Wa

Equipment name

Type designation (Type)

單元 Unit	限用物質及其化學符號 Restricted substances and its chemical symbols					
	鉛 Lead (Pb)	汞 Mercury (Hg)	鎘 Cadmium (Cd)	六價鉻 Hexavalent chromium (Cr+6)	多溴聯苯 Polybrominated biphenyls (PBB)	多溴二苯醚 Polybrominated diphenyl ethers (PBDE)
塑膠殼體	○	○	○	○	○	○
電路板	—	○	○	○	○	○
揚聲器	○	○	○	○	○	○
排線	○	○	○	○	○	○
金屬緊固件	—	○	○	○	○	○

備考1. “超出0.1 wt %”及“超出0.01 wt %”係指限用物質之百分比含量超出百分比含量基準值。

Note 1: “Exceeding 0.1 wt %” and “exceeding 0.01 wt %” indicate that the percentage content of the restricted substance exceeds the reference percentage value of presence condition.

備考2. “○”係指該項限用物質之百分比含量未超出百分比含量基準值。

Note 2: “○” indicates that the percentage content of the restricted substance does not exceed the percentage of reference value of presence.

備考3. “—”係指該項限用物質為排除項目。

Note 3: The “—” indicates that the restricted substance corresponds to the exemption.

**Modelo: PHS040Wa/END040W**



*Agência Nacional de Telecomunicações*

**00711-20-05774**

**05623-17-05774**

Este equipamento não tem direito à proteção contra interferência prejudicial e não pode causar interferência em sistemas devidamente autorizados.

Para maiores informações, consulte o site da ANATEL: [www.anatel.gov.br](http://www.anatel.gov.br).

© 2020 GN Audio A/S. All rights reserved. Jabra® is a trademark of GN Audio A/S. The Bluetooth® word mark and logos are registered trademarks owned by the Bluetooth SIG, Inc. and any use of such marks by GN Audio A/S is under license.

MADE IN CHINA

MODEL: PHS040Wa / END040W

FCC ID: BCE-PHS040WA / END040W

IC: 2386C-PHS040WA/ END040W

CMIIT ID: 2017DJ0327

CMIIT ID: 2020DJ0305

GB 8898-2011

Complies with  
IMDA Standards  
DA102350



R-R-GMS-1/6  
MSP-CEM  
GMS-END040W



CCA19LP9630T5  
CCA17LP0460T0



020-190265  
006-000458



EAC



Bluetooth®